

G-2020 | G-2023 | G-2323

SMOOTH FINISH STEEL
THICKNESS: 1 3/4"

POLYURETHANE SANDWICH DOOR
R-16 INSULATION



G-2023 doors, 10' x 10' and 12' x 12', Tex White

FEATURES AND BENEFITS


A HIGH-PRESSURE INJECTED POLYURETHANE

- Stronger and more energy-efficient insulation
- Solidly bonded to the steel sheets providing a section that is **resistant to flexion**.

B SMOOTH STEEL FINISH

- 23-gauge or 20-gauge steel, provides a **bending resistance 15% greater** than 26-gauge steel, for better resistance to impact and vandalism.
- **Highly corrosion-resistant** with galvanized steel having a minimum of G60 zinc coating (180 g/m²).


C INTERLOK™ TRIPLE-CONTACT JOINTS

- Sections are **strengthened** by 2 steel walls joined together with **mechanical interlocking** joints which are more solid than just two bonded walls.
- Their mechanical **thermal breaks** are more efficient compared to thermal breaks made with glue.
- Triple-contact joints **provide 2 times more weathertightness** than those of the competition. 

D METAL REINFORCEMENT PLATES

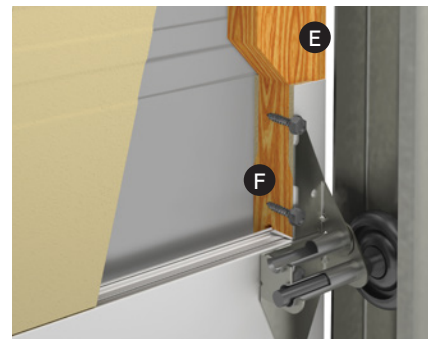
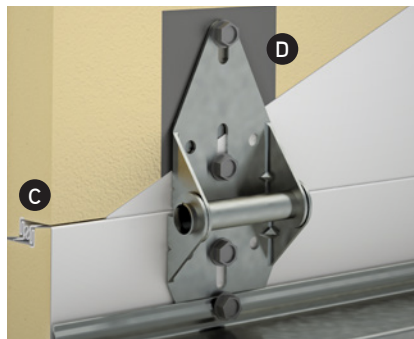
- Provide **stronger fastening** for hinges and struts. These 14-gauge plates are 2 times thicker than 20-gauge plates used by other manufacturers.

E WOOD END BLOCKS

- Provide a **thermal break** that is more effective than steel end caps which form a thermal bridge. 
- As **structural elements** of the sections, the kiln-dried pine wood end blocks are installed at the outer ends of the section. They are stronger than insulation covered with a steel cap.

F LAG SCREW SYSTEM

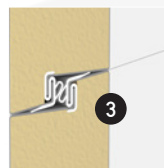
- Provides much **better fastening** of the end hinges. The lag screws engage 8 threads into the wood, compared to a self-tapping screw going through a steel end cap engaging only about 2 or 3 threads.



PANEL CONSTRUCTION

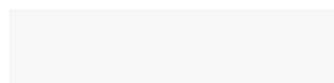
- 1 **Steel walls**
 - G60 **hot-dipped galvanized steel** with five coats of protective finish.
 - G-2020:** 20-gauge exterior and interior steel skin
 - G-2023:** 20-gauge exterior and 23-gauge interior steel skin
 - G-2323:** 23-gauge exterior and interior steel skin
 - Baked-on **polyester paint**. Can be repainted.
 - Smooth finish on both sides of the door.
 - Same quality of corrosion-resistant steel for interior and exterior faces
- 2 **1 3/4" (44.5 mm) insulated door** with high-pressure injected **polyurethane foam** ensuring a high thermal-resistance rating of **R-16** (RSI 2.8 or k= 0.357 W/m²K) and the solidity of a composite material.
- 3 **InterLok™ joints** between each section:
 - **Mechanical joints** ensure stronger sections with walls of each panel mechanically interlocked (not only bonded by the polyurethane).
 - **Mechanical thermal break** avoids heat transfer between the interior and exterior walls of each section.
 - **Triple-contact joint** prevents air infiltration.
- 4 **U-shaped tubular bottom weatherstripping** made of thermoplastic elastomer (TPE) ensures the weathertightness of the threshold. Remains flexible and watertight during cold weather, to -62°F (-52°C).
- 5 **Wood end blocks** made of kiln-dried pine (grade 4). With our lag screw system, they ensure better fastening of end hinges. They also provide a thermal break which prevents thermal bridging.
- 6 14-gauge steel **reinforcement plates** placed inside the door for solidly attaching hinges and struts.

Door weight: **G-2020:** 3.35 lb/ft² (16.3 kg/m²)
G-2023: 3.15 lb/ft² (15.4 kg/m²)
G-2323: 2.85 lb/ft² (13.9 kg/m²)



Interior view

COLOR



Tex White

Color may slightly vary from image

SIZES

Widths In 1" (25 mm) increments	From 5' to 24'2" (1.5 m to 7.4 m)	
Heights ¹ In 3" (76 mm) increments	From 6' to 24' (1.8 m to 7.3 m)	¹ G-2023: Not available in 75", 78" and 81" high.

WINDOWS



Standard Windows

21" x 13" (533 mm x 330 mm)
 Thermopane: Clear, Sandblasted,
 Tempered, Laminated or Tinted
 Single glass (3 mm): Clear or Sandblasted
 Colors: White



G-4400 Sections (Full Vision)

Colors: White, Black and Anodized

PANEL DESIGN



HARDWARE

Steel tracks: • 2" (50 mm), 13-gauge or 14-gauge
 • 3" (76 mm), 12-gauge

WARRANTIES (LIMITED)

10 years against any perforation of steel due to rust
 10 years on the wood end blocks against cracking and rot
 10 years against delamination of the steel skin from the polyurethane foam
 1 year on other door components
 10 years against seal defects on Standard windows



8500 25th Avenue,
 St-Georges, QC
 G6A 1K5 Canada

1 866 960-2828
 info@garaga.com
 garaga.com

YOUR
GARAGA
 DISTRIBUTOR

FSC LOGO