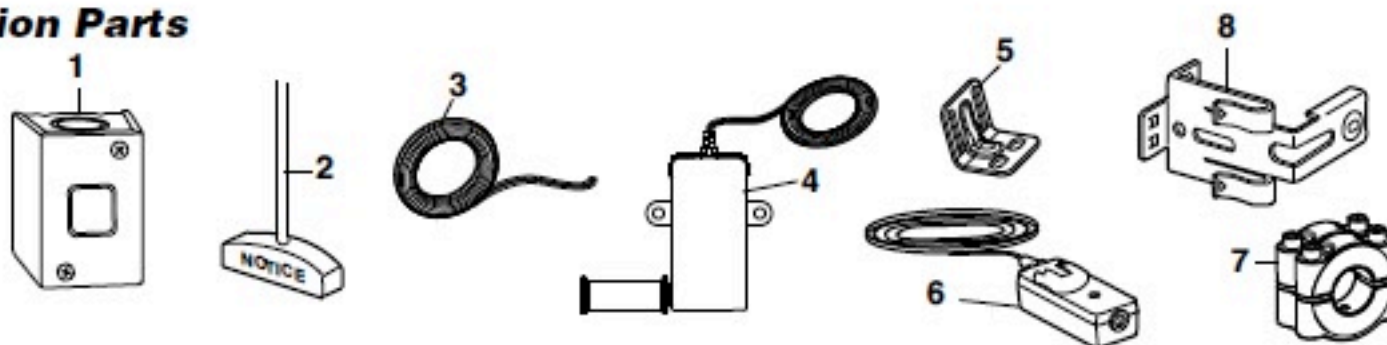


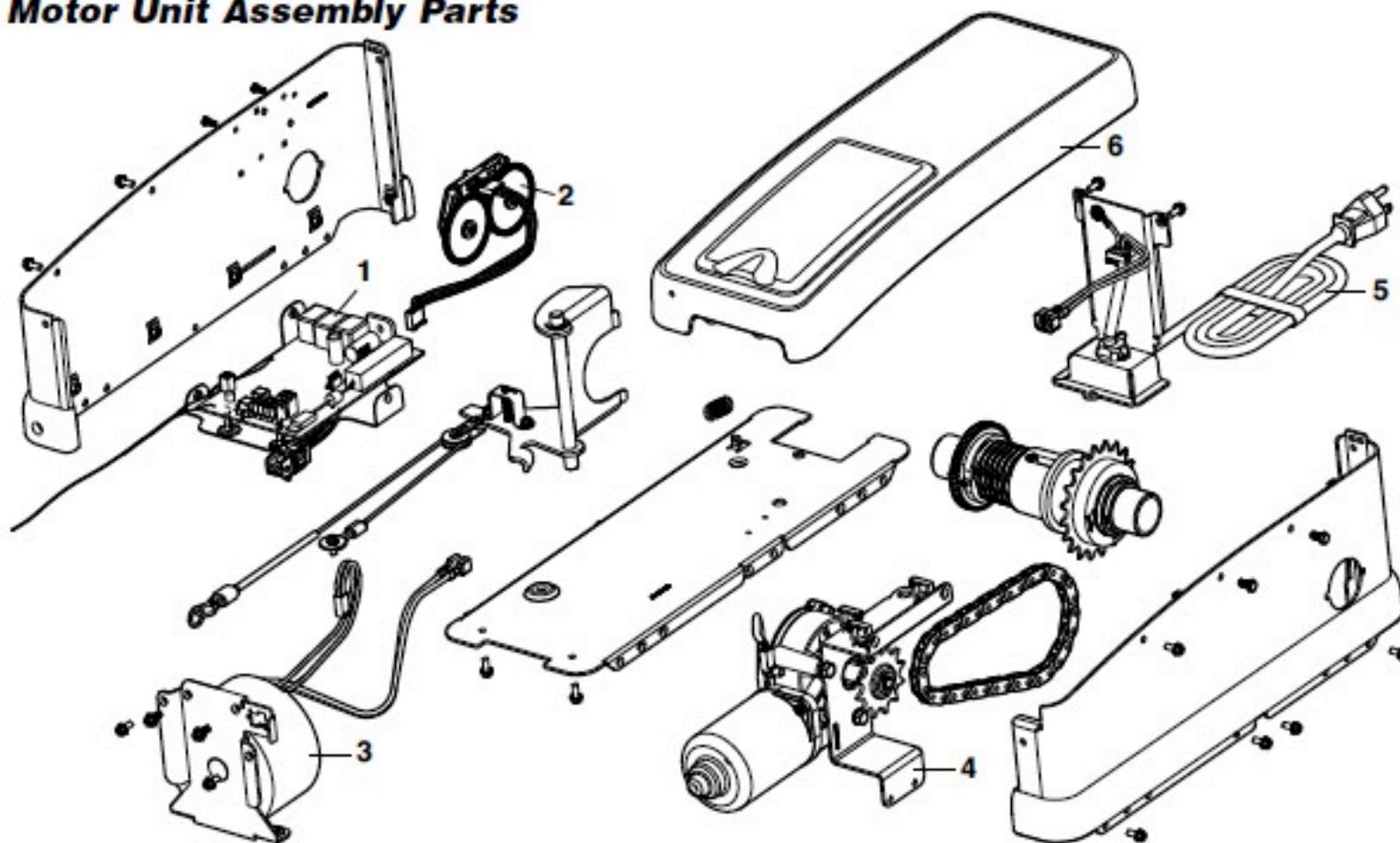
## REPAIR PARTS

### Installation Parts



KEY NO.	PART NO.	DESCRIPTION	KEY NO.	PART NO.	DESCRIPTION
1	APBS 1	Single button control station	7	41A6388	Collar with set screws (2)
2	41A4582	Emergency release rope & handle assembly	8	41A5266-1	Safety sensor brackets (2)
3	41B4494-1	2-Conductor bell wire - white & white/red	<b>NOT SHOWN</b>		
4	41A6104	Cable tension monitor	41A6298	Installation hardware bag (includes hardware listed on page 5)	
5	41C0902	Mounting bracket	114A3593	Owner's manual	
6	41A5034	Safety sensor kit (receiving and sending eyes) with 3' (.9 m) 2-conductor bell wire attached			

### Motor Unit Assembly Parts



KEY NO.	PART NO.	DESCRIPTION	KEY NO.	PART NO.	DESCRIPTION
1	41DJ001	Logic board complete with plate	4	41A6095	Motor with bracket
2	41A6408	Absolute Encoder System	5	41B122	Power cord
3	41C168	Transformer	6	41A6348-3	Cover